

MEDIWAT PROJECT

KICK-OFF MEETING

PALERMO

23 – 25th SEPTEMBER 2010

BACKGROUND

MALTA

Small island (total surface area of 316km²) in the central Mediterranean

Very high population density (1478 persons/km²)

25% of the total land area is urbanised

Different economic activities going on side by side

BACKGROUND

WATER RESOURCES

Semi-arid climate (mean annual rainfall 500mm)

No exploitable surface waters

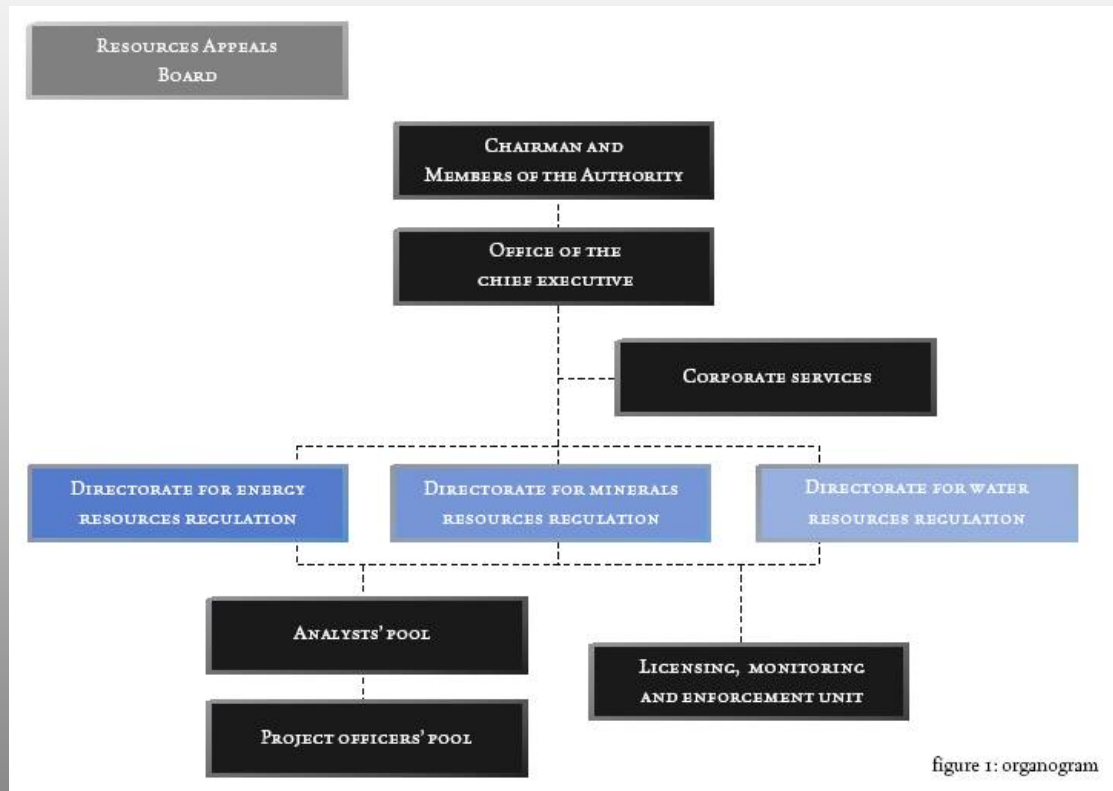
Groundwater is the only natural water resource

Groundwater resources are under threat from both quantitative and qualitative pressures

INSTITUTION

The **Malta Resources Authority** is a public corporate body with regulatory responsibilities relating to water, energy and mineral resources in the Maltese Islands. It was set up by the Maltese Parliament through the Malta Resources Authority Act of 2000. The MRA has wide ranging responsibilities essentially involving regulation of water and energy utilities, industrial enterprises exploiting resources such as oil exploration, quarry operators and private abstractors of groundwater, retailers, operators and tradesmen in the regulated sectors.

INSTITUTION



Water Directorate

Director

Researchers

3

Research Support

3

General Support

2

WATER RESOURCES

The Malta Resources Authority (MRA) is entrusted with the regulation of water resources in the Maltese islands:

- Economic Regulation
- Environmental Regulation

The MRA is also the Competent Authority responsible for the implementation of a number of European Environmental Directives such as the:

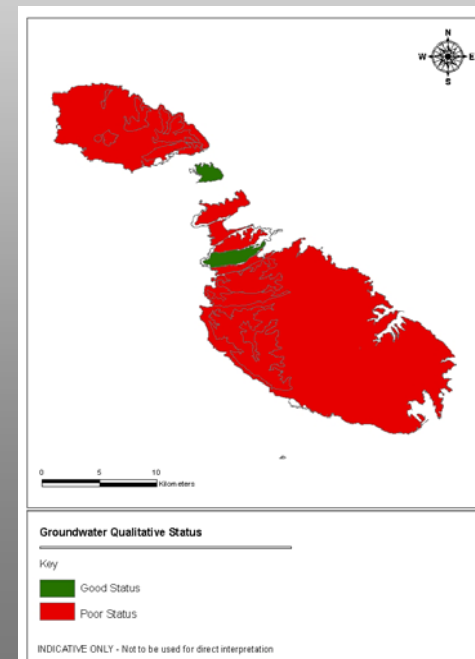
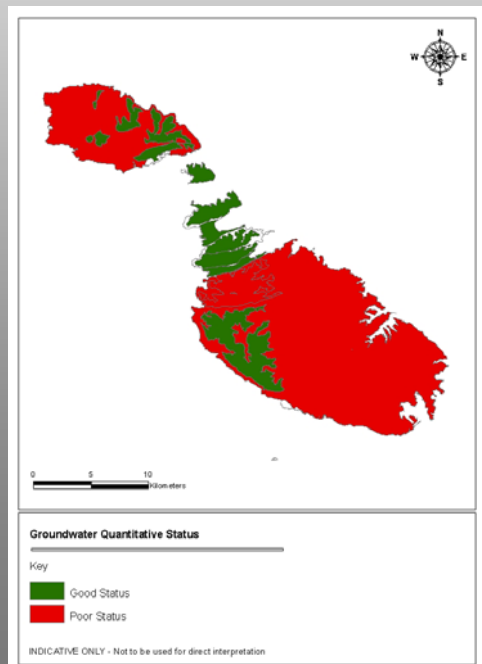
- Water Framework Directive;
- Floods Directive; and
- Groundwater Directive.

TASKS

WFD Implementation

Coordinating the implementation of the national RBMP.

Determination of status and analysis of trends in relation to achievement of status.

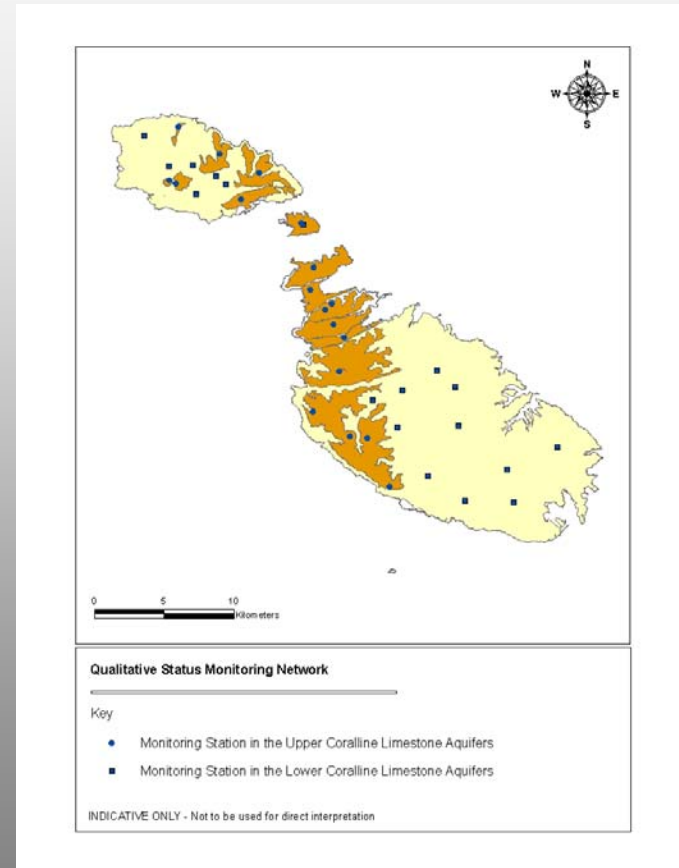


TASKS

MONITORING FOR GROUNDWATER STATUS

Qualitative Monitoring
Network launched

Quantitative Monitoring being
implemented.

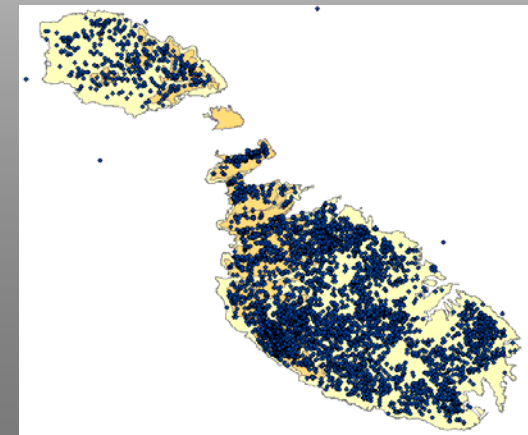
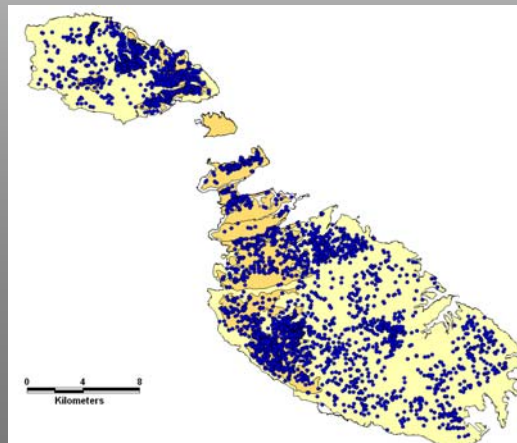
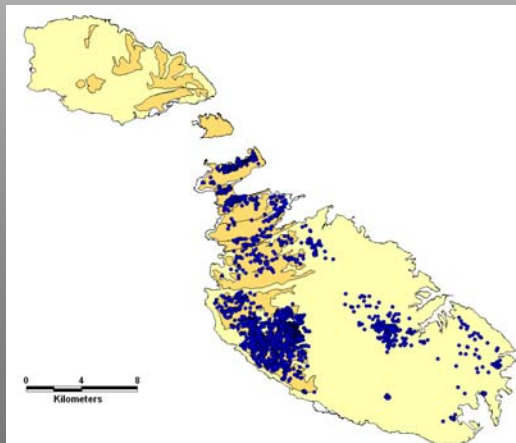


TASKS

REGULATION OF GROUNDWATER ABSTRACTION

Registration of public and private abstraction

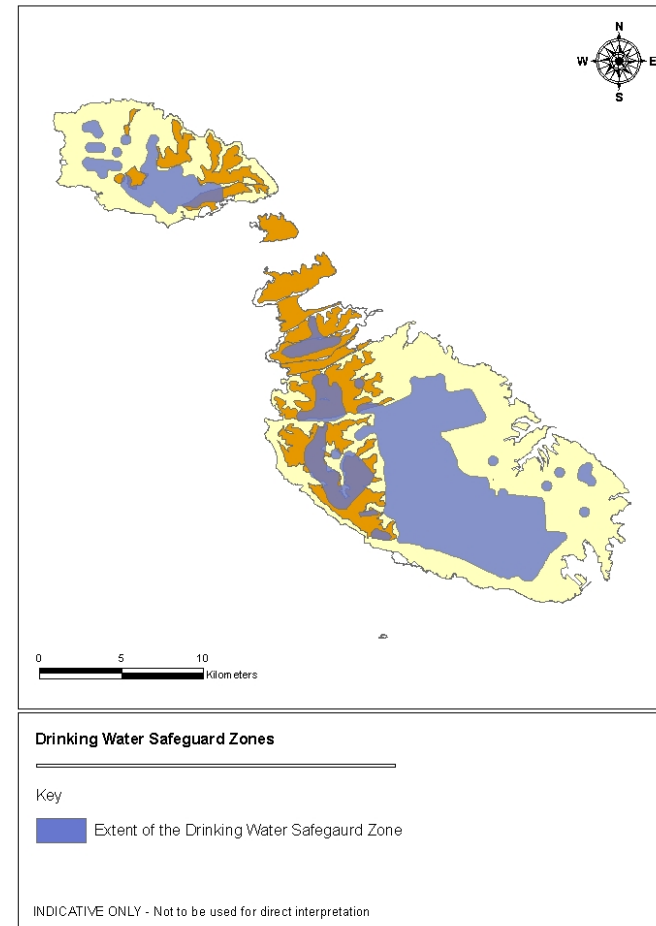
Metering of groundwater sources and establishment of quotas



TASKS

Management of Protected Areas (in relation to groundwater)

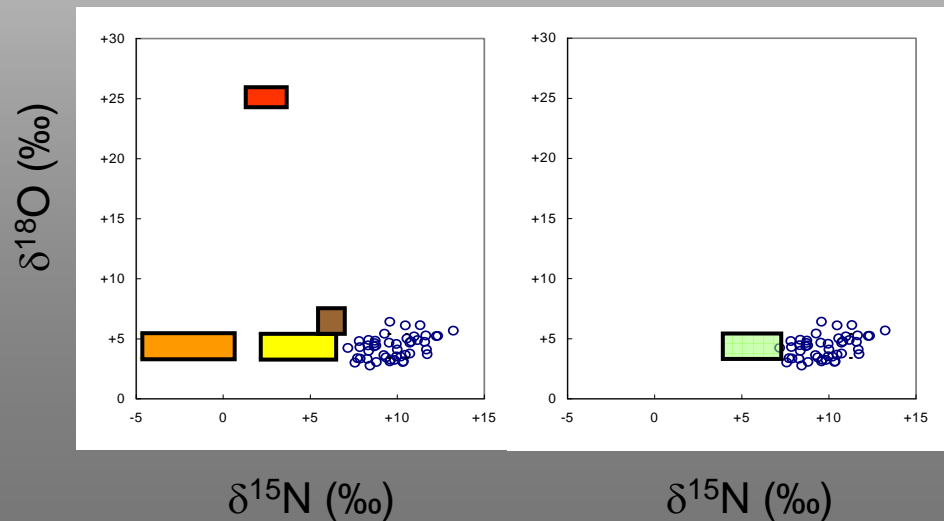
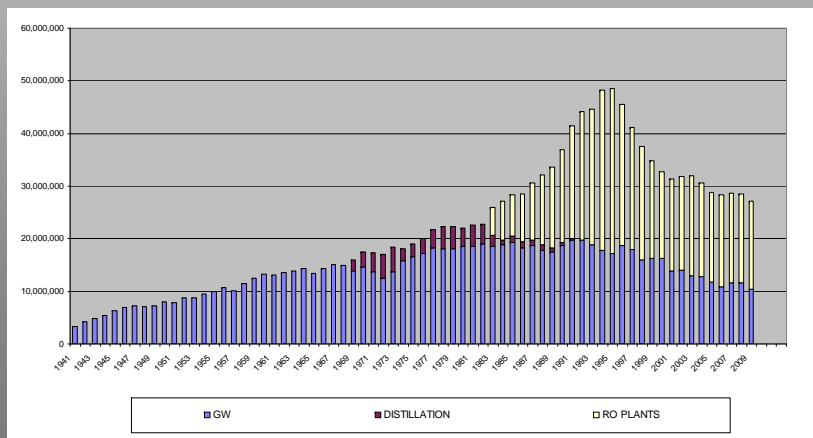
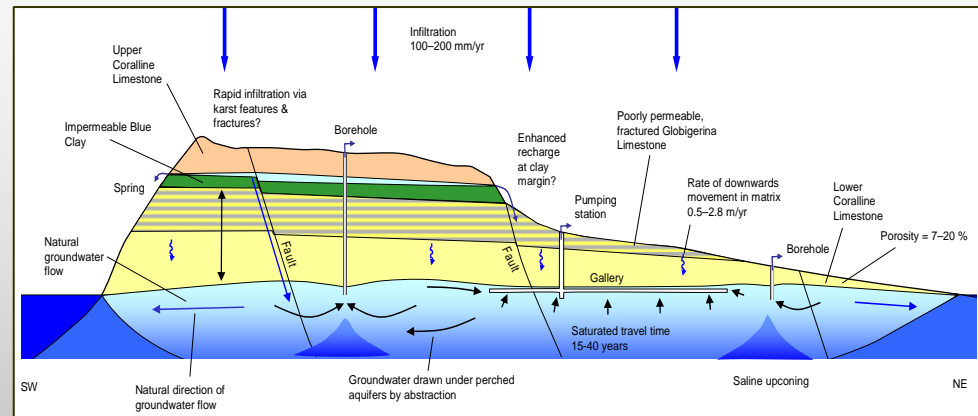
Focusing of preventive actions and planning controls around public abstraction sources.



TASKS

Research

Aquifer Modelling
 Groundwater Management
 Supply Augmentation
 Demand Management
 Pollutant concentrations and transfer mechanisms



THANK-YOU